



Traffic management strategies: good planning is half the go.

The objective

Today, effective public strategies in traffic management are more important than ever before. Depending on the given mobility demand and the available infrastructure, the traffic situation should be controlled in the best way possible.

The challenge

Situations that can affect traffic flows are diverse in nature: they range from acute disruptions to foreseeable events or predictable, recurring interventions in the public road space. There is a lack of a common view on underlying conditions as well as transparency of decisions.

The solution

TRAFF-X.plan facilitates the elaboration of strategies in traffic management. Problem situations and their potential solutions are made visible and their effects are evaluated. Traffic management strategies including their corresponding measures are assigned to specific situations and are centrally managed as scenarios.

Traffic authorities

§ develop preventive traffic management strategies in order to avoid conflicts in the traffic system and to optimize traffic flows.

✓ smart mobility

Municipalities

🏢 ensure lasting usability of infrastructure in the best possible way, even in the event of disruptions and high loads.

✓ qualitative improvement of traffic flow

Traffic engineers

🖥️ can identify challenging situations at an early stage and choose the most appropriate strategy for counteracting them.

✓ strategies and their effects



From the analysis of a situation to planning a suitable strategy and its activation.

Design traffic management strategies

Define situations

- capture traffic-relevant data
- define route sections and areas of the traffic network for observation
- define conditions and thresholds as triggers to identify situations
- record traffic situations

Define interventions into traffic

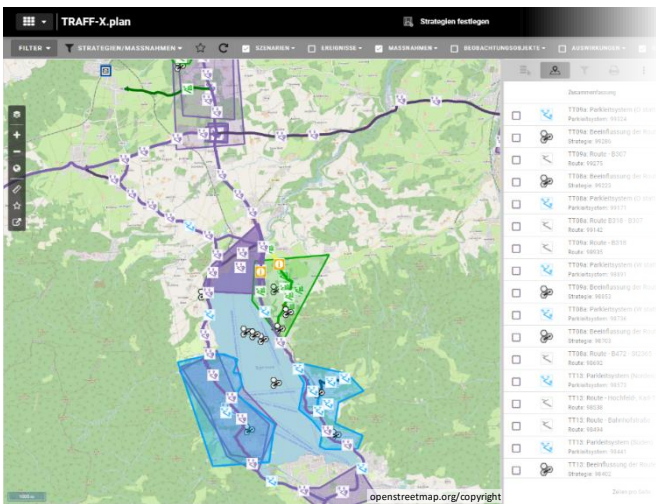
- define possible strategies with specified goals and corresponding measures
- create and manage a library of strategies
- schedule actuators (e.g. traffic signals, information boards) and transfer data to the traffic computer

Manage situations

- create a situation library: organize traffic situations according to different criteria and narrow down incidents
- document traffic situations and the associated parameters in a comprehensible way

Evaluate scenarios

- compare different strategies together with their associated measures for a specific traffic related challenge situation
- evaluate selected strategies and examine their measures for potential conflicts

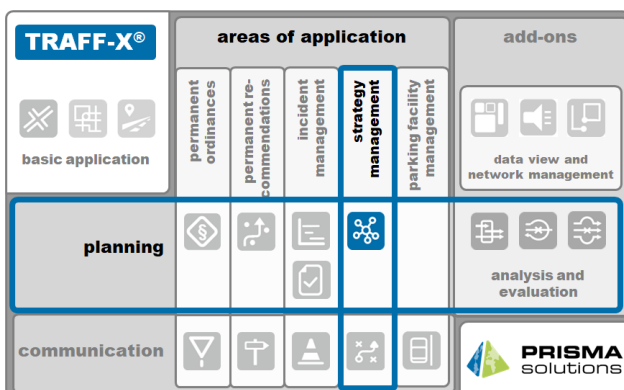


Select strategies

- log decisions
- select the most appropriate strategy and communicate it to traffic computers and other traffic control systems



A module of the traffic management product family PRISMA TRAFF-X® solutions



This module is part of the traffic management platform TRAFF-X®, a software developed by PRISMA solutions for your tasks in cooperative traffic management. TRAFF-X® is designed as a web application. After installation on central servers, where data management and exchange also take place, TRAFF-X® is run in a web browser.